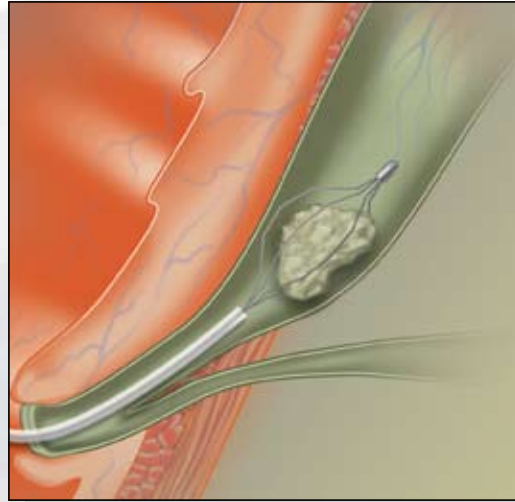
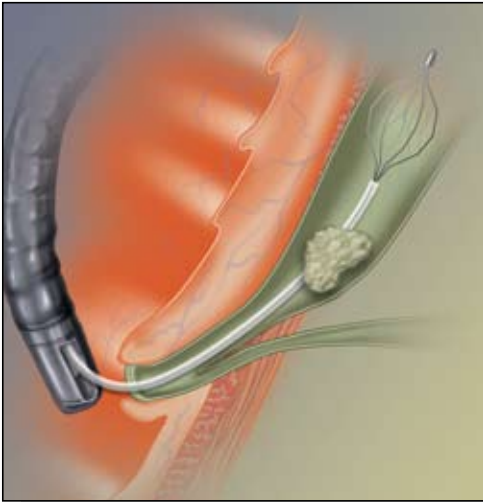


IMPORTANT: Prior to mechanical lithotripsy, refer to current instructions for detailed system use. Also refer to Wilson-Cook product labels to confirm compatibility of baskets and minimum accessory channel. **Wire cutters must be available** for this procedure.

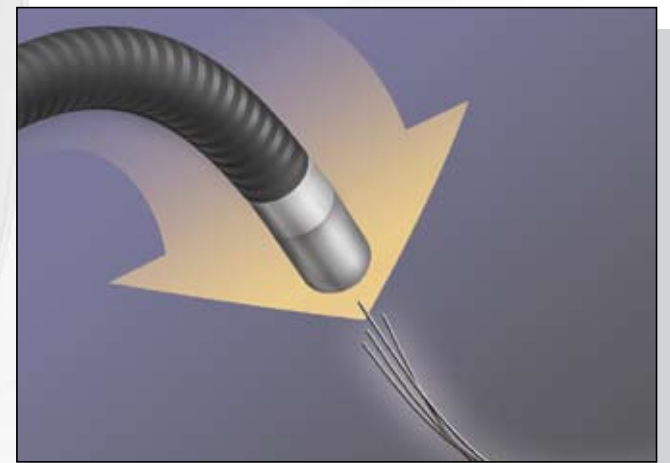
STEP 1 - ADVANCE

Fluoroscopically confirm stone entrapment with basket.



STEP 4 - INTRODUCE CABLE

Introduce the lithotripsy cable over the basket wires and through the channel until the wires exit the proximal end of the cable. Grasp the basket wires exiting the cable.



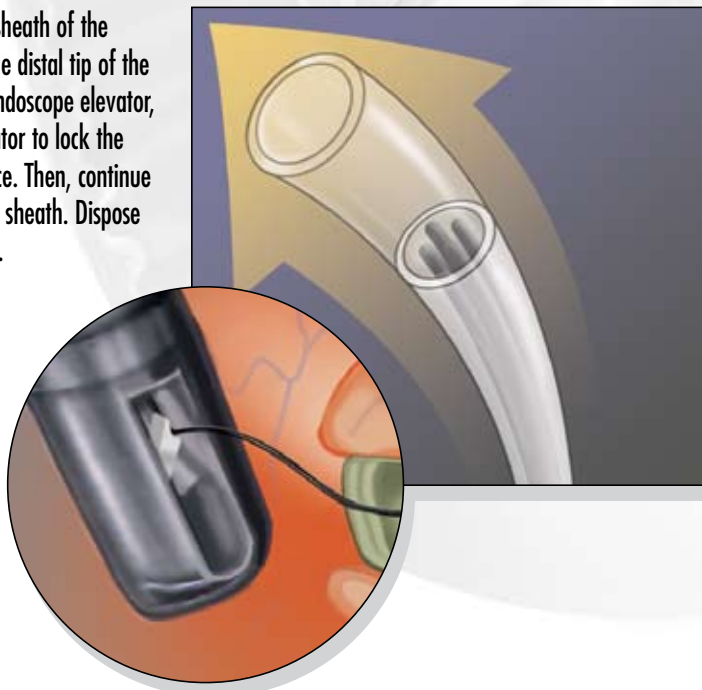
STEP 2 - CUT WIRE

cut

Once the stone is completely captured in the basket, make a complete cut, using wire cutters, at the junction of the 10 FR and 7 FR sheath.

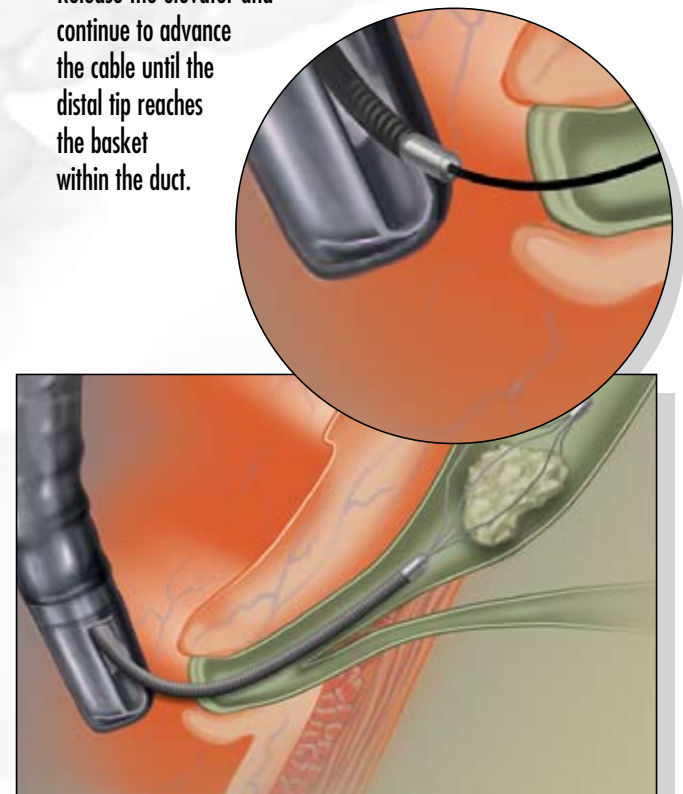
STEP 3 - REMOVE SHEATH

Remove the outer sheath of the basket slowly. As the distal tip of the sheath clears the endoscope elevator, gently lift the elevator to lock the basket wires in place. Then, continue removing the outer sheath. Dispose of the outer sheath.



STEP 5 - ADVANCE CABLE

Release the elevator and continue to advance the cable until the distal tip reaches the basket within the duct.





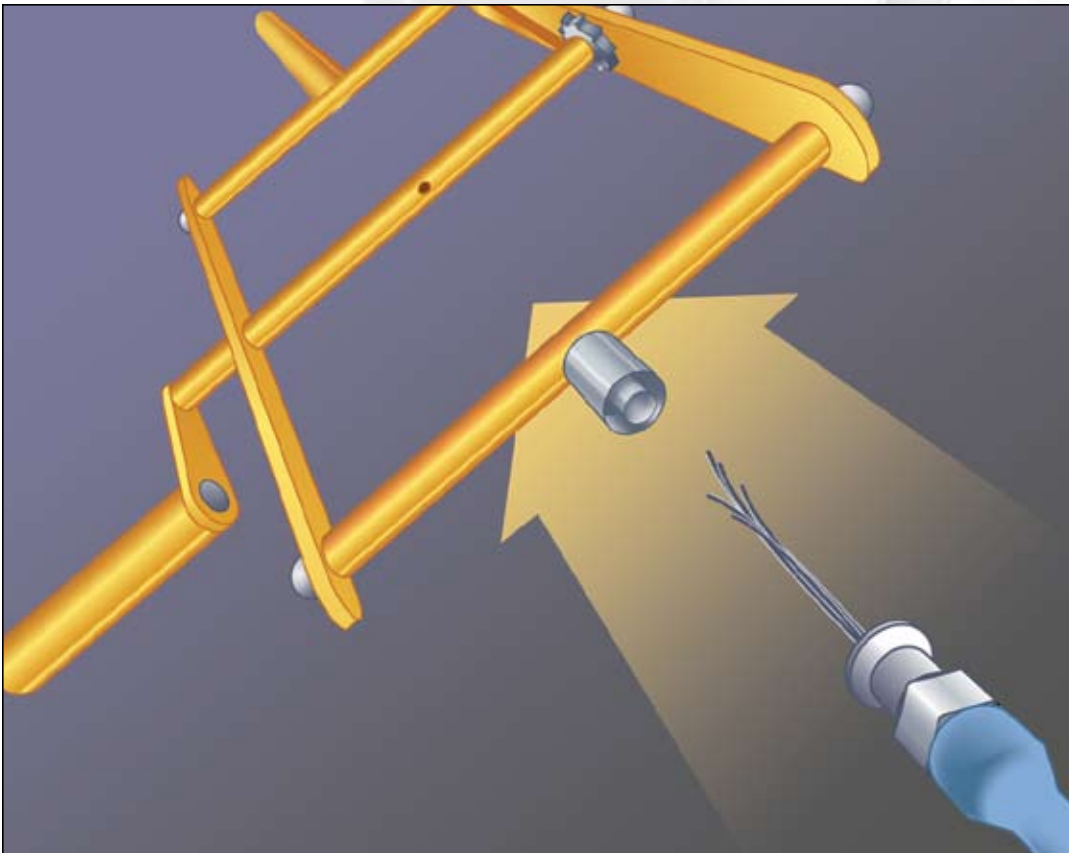
If additional contrast is necessary, refer to step 6 to attach Tuohy-Borst adapter.

STEP 6 - CONTRAST ADAPTER

To attach adapter, insert the basket wires through the male Luer lock of the Tuohy-Borst adapter. Continue to slide the adapter over the basket wires until the male Luer lock engages the female Luer lock of the cable. Tighten the male Luer lock to prevent leakage during injection. Tighten female Luer lock to prevent back flow during injection. The Tuohy-Borst adapter need not be attached if additional contrast is not required for the procedure.

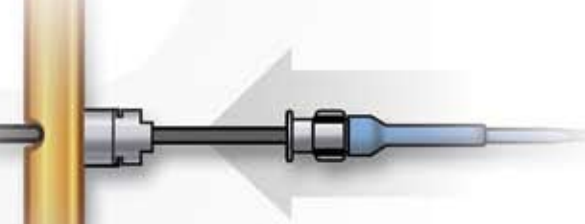
STEP 7 - HANDLE

Pass the basket wires through the male Luer lock on the lithotripsy handle; and through the rotating rod opening of the handle.



STEP 8 - CONNECT LUER LOCK

Connect the male Luer lock of the lithotripter handle to the female Luer lock of the adapter (if applicable). Wrap the basket wires around the rotating rod to secure.



STEP 9 - FRACTURE STONE

Apply slow steady pressure by rotating the handle. Sudden release of pressure may indicate fracture of the stone, fracture of the basket, or loss of the stone from the basket. **NOTE:** The handle will only move in one direction unless the ratchet is released. **WARNING:** If basket fragmentation should occur, surgical intervention may be necessary.

STEP 10 - REMOVE BASKET

After the stone has been fractured, assess the need to remove the fractured stone from the duct. Release the ratchet on the handle and remove the basket.

COOK® Wilson-Cook Medical
GI Endoscopy

4900 Bethania Station Rd • Winston-Salem, NC 27105
336-744-0157 • Fax: 800-743-1147 • 336-744-1147

USA Customer Service: 800-245-4717
www.wilsoncook.com

Refer to current instructions for detailed system use.
© 2001 Wilson-Cook Medical Inc.